

# AccuGuide™

## Positive Displacement Guide

**PDG-FS Series**



864204 PDG-FS

The PDG-FS frame style web guide assemblies feature rugged designs to meet the demands of all wide web applications.

The AccuGuide PDG-FS Series of Positive Displacement Guides are constructed of welded structural steel tube to provide the exceptional strength and reliability needed for wider webs and higher tension applications. Like all AccuWeb web guides, the PDG-FS Series incorporates proprietary linear bearings and a carriage design that allows optimum web guide performance whether installed in a vertical, horizontal or inverted position.

***Like Every AccuWeb® Guide Component, the AccuGuide PDG-FS Series are Built to Last.***

- **Heavy-Duty Construction** — Structural steel tube design engineered to provide the optimum strength-to-weight ratio for high tension load applications.
- **Proprietary Linear Bearing System** — The PDG-FS Series incorporate proprietary linear bearings that support and secure the moving frame and idler roller assembly to the guide's stationary base. Its unique cam-following bearing design minimizes friction and wear while allowing fast response to the guide actuator.
- **Custom Assemblies** — When a challenging application can't be solved with a standard product, a custom designed AccuGuide PDG-FS provides a huge range of frame, roller, and finish options.
- **Easy Wipe Down** — Optional ground welds provide the smooth, burr-free surface required for clean room environments.
- **Free-turning Idler Rollers** — Free-running bearings minimize rotational torques — ideal for running light webs. Dynamically balanced rolls ensure vibration-free performance. Choose from live shaft or dead shaft options.
- **Engineered for Wide Webs** — The PDF-FS is ideal for web widths up to 240" (6.10m).

Linear bearing system provides line contact for long-life operation



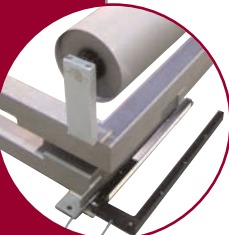
Pedestal designs with lead-in and lead-out idler rollers may be integrated for easy installation



Heavy-duty frame style guides are matched with appropriately sized heavy-duty linear actuators



WideArray™ Edge Detectors mounted to a PDG-FS guide



Manufactured in the United States  
under one or more patents and trademarks.

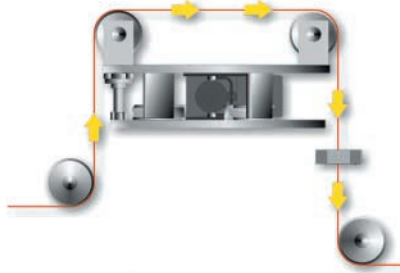
  
**AccuWeb, Inc.**  
www.accuweb.com

## Custom Applications

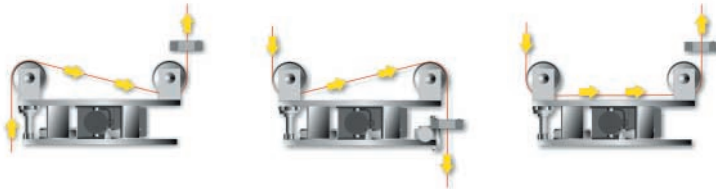


This example of a custom PDG is of a six web pedestal AccuGuide PDG-FS for a sheeter application.

A PDG is the most common and accurate way to guide a web. It requires relatively small entry and exit spans. The moving frame pivots on the incoming web plane to guide the web to its desired position. The AccuGuide PDG-FS Series are engineered for web widths ranging from 30" (762mm) to 240" (6.10m).



### Typical web threading configurations



### Frame Options

- Electrolysis Nickel
- Stainless Steel
- Smooth Welds
- Pedestal (3rd and 4th rollers)
- Walkways
- Custom Paint Colors

### Roller Options

- Plasma Coated
- Rubber Covered
- Hard-coat Anodized
- Cork Covered
- Micro-grooved
- Chilled
- Driven
- Low-inertia
- Carbon Fiber
- Teflon®

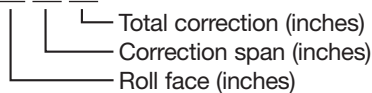
### The AccuGuide Series of PDGs Include:

- PDG-FS Series – a heavy-duty guide with tubular steel framing
- PDG-AP Series – a premium mid to narrow web guide with anodized aluminum plate construction
- PDG-PS Series – an economical narrow web guide featuring a modular, drop-in design

### Model Nomenclature

Example: **Model 543604 PDG-FS**

**54 36 04**



Toll free: (888) 422-2893 • Web site: [www.accuweb.com](http://www.accuweb.com)

## An AccuWeb System is a Sound Investment

- **Tangible Benefits —**  
While web guides represent a nominal expense within an entire converting line, they can have considerable impact on product quality, process waste, operating speeds, efficiency and maintenance costs. Choosing a web guide system that delivers optimum trouble-free performance is a wise investment.
- **The Support of Web Guide Experts —** The AccuWeb application engineering team helps you determine the best guide design and location to fit your specific converting operation. By evaluating your web widths, materials and change-over frequencies, as well as operating environment, AccuWeb helps ensure greater harmony between our innovative guide components and your web converting process for an optimum return on your investment.

### World Headquarters

P.O. Box 7816  
Madison, WI U.S.A. 53707

Phone: (608) 223-0625

Fax: (608) 223-0074

### European Sales and Support

Formanguieres 87  
CH-1782 Belfaux/Switzerland

Phone: +41 26 475 5028

Fax: +41 26 475 5025